

***Rudbeckia*
chapmannii and allies
(somewhat
miscellaneous,
including “*speciosa*”
auctores D)**

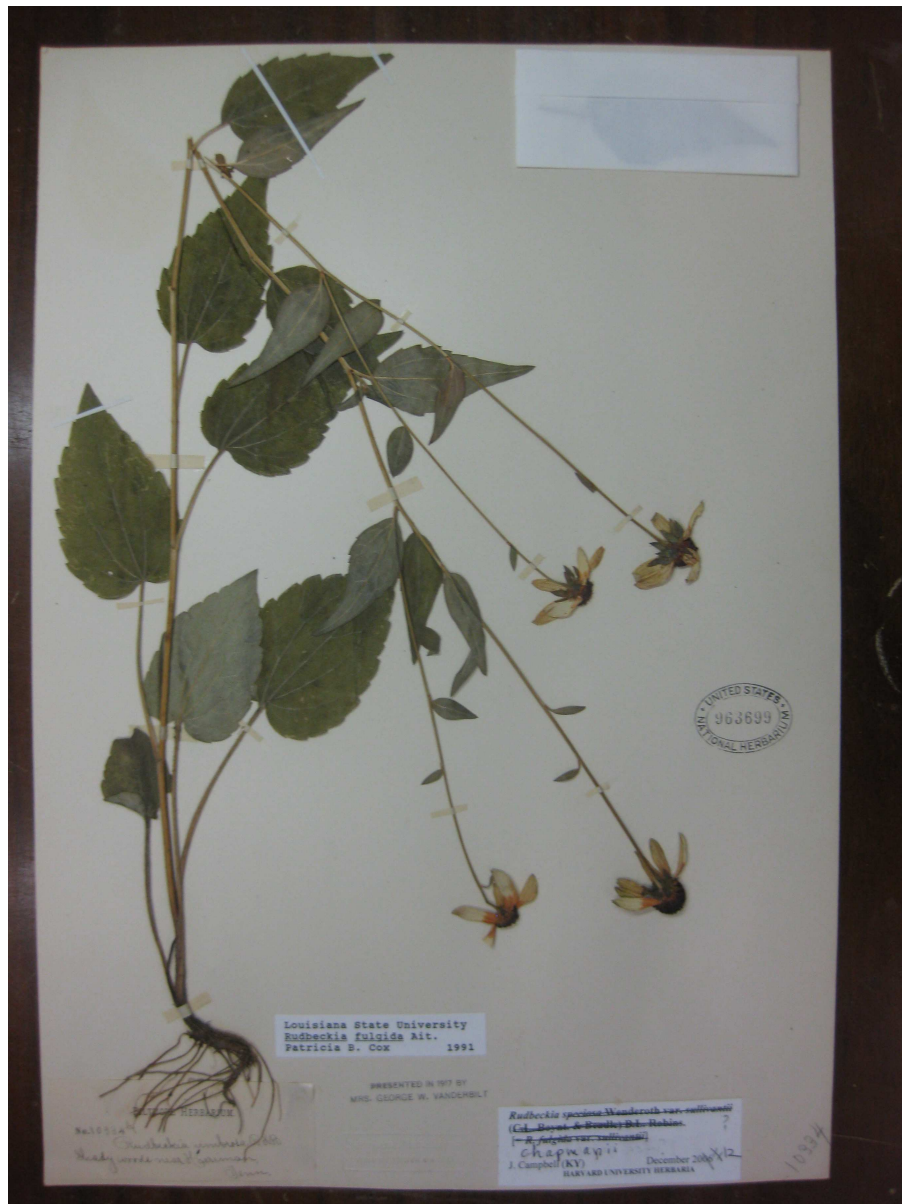
chapmannii: type, Cleaveland s.n. from Dalton [Floyd Co.], Georgia, at NY.



chapmannii: ex Chapman Herbarium, from "Mts. of Georgia" at NY.



chapmannii: Biltmore Herb. 10884b [?], from near Harriman [Roane Co.], Tennessee, at US. This has relatively small heads and relatively broad lower cauline leaves, suggesting a transito to *umbrosa*



chapmannii: by Vasey from Birmingham [Jefferson Co.], Alabama, at NY.



chapmannii: OPGC 3082 grown at Ohio State University; originally from Nashville area in Tennessee.



chapmannii: OPGC 3082 grown at Ohio State University; originally from Nashville area in Tennessee.



aff *chapmanii*: from Coffee Co., Tennessee; cultivated in Lexington, Kentucky; this photo taken on 20 Sep 2013; plants not flowering until Oct-Nov here in cultivation on north side of house with partial sun, much later than adjacent plants of different taxa.



aff. *chapmanii*: from Lewis Co., Tennessee; cultivated in Lexington, Kentucky; 20 Sep 2013.



aff. *chapmanii*: from Lewis Co., Tennessee; cultivated in Lexington, Kentucky; 20 Sep 2013.



aff. *chapmanii*: from Lewis Co., Tennessee; cultivated in Lexington, Kentucky; 20 Sep 2013.



aff. *chapmanii*: from Clinton Co., Kentucky; cultivated in Lexington, Kentucky; 20 Sep 2013; this may approach *R. sullivantii*.



aff. *chapmanii*: from Clinton Co., Kentucky; cultivated in Lexington, Kentucky; 20 Sep 2013; this may approach *R. sullivantii*.



aff. *chapmanii*: from Clinton Co., Kentucky; cultivated in Lexington, Kentucky; 20 Sep 2013; this may approach *R. sullivantii*.

